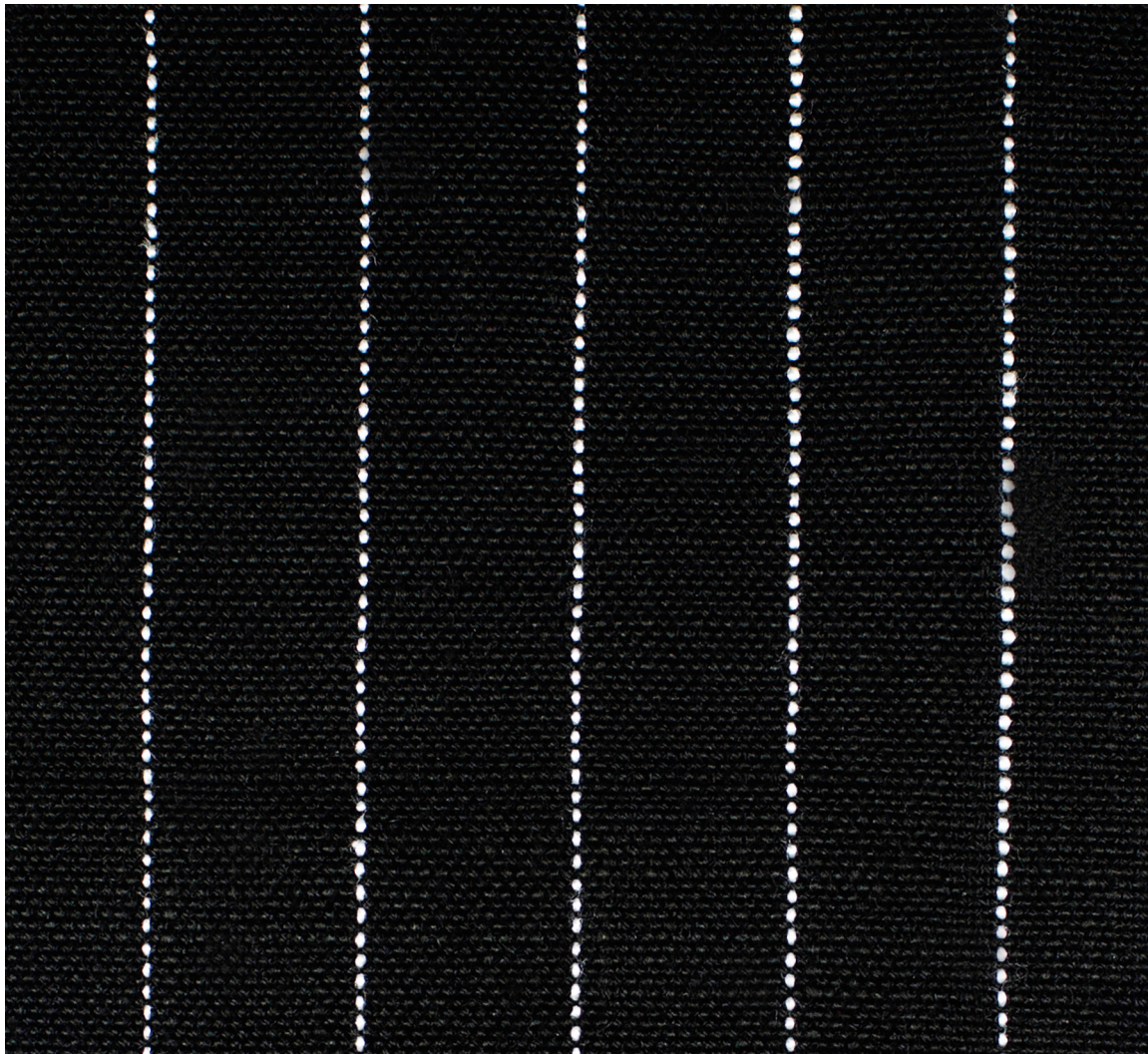


Peggy Platner

COLLECTION



CARMEL

LINEN WITH A TAILORED WOVEN STRIPE

FABRIC CODE: PP 96/06

COMPOSITION: 60% LI 40 % VI

WIDTH: 55"

DOUBLE RUBS: 26,000

ORIGIN: ITALY

CONTACT@PEGGYPLATNERCOLLECTION.COM

WWW.PEGGYPLATNERCOLLECTION.COM

PLEASE CONTACT THE LOCAL SHOWROOM IN YOUR AREA FOR ORDERS, SAMPLES AND INFORMATION.
FOR MORE INFORMATION & A LIST OF SHOWROOMS PLEASE VISIT US ONLINE.